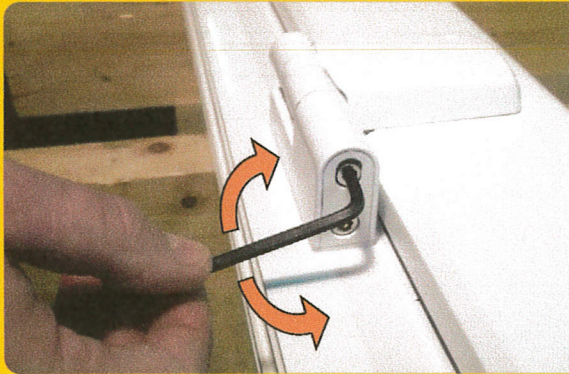


## DOOR HINGE ADJUSTMENT

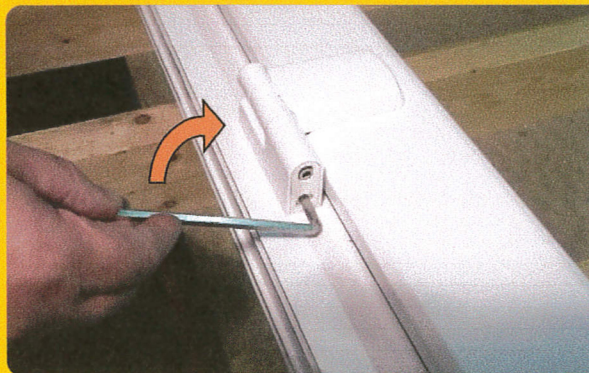


### Compression Adjustment

+/- 1.5mm

4mm Allen Key

Rotate the Allen Key Clockwise or Anti-Clockwise to give the required compression setting  
Ensure compression is evenly distributed across all hinges  
Note: In rotation positive "click" positions are felt - (2 in each direction from the central position)

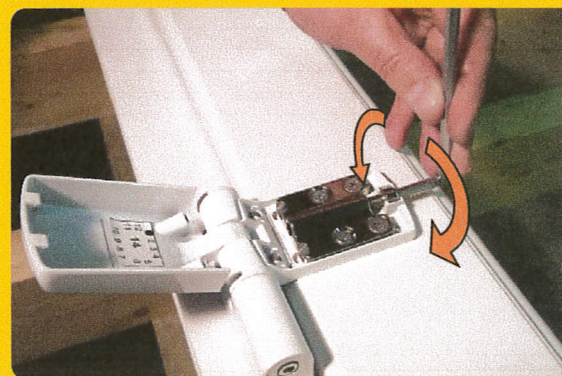


### Height Adjustment

+ 8mm  
- 0

5mm Allen Key

Rotate the Allen Key Clockwise give the required height setting  
Ensure that the weight of the door is evenly distributed across all hinges



### Lateral Adjustment

+/- 6mm

5mm Allen Key

Rotate the Allen Key Clockwise or Anti-Clockwise to give the required lateral setting  
Ensure even distributed across all hinges